

ThinkSmart Inc

Smart Upload

TRANSDYNE

Installation Guide

SMART UPLOAD

Installation and configuration

© ThinkSmart Inc.

7220 Trade St, Suite 203 • San Diego, CA 92121

Phone 866 290 0301 • Fax 866 290 0789

Table of Contents

Chapter 1	-	Introduction	2
		Installation Sequence	2
		Estimated Time	2
Chapter 2	-	Requirements	3
Chapter 3	-	Begin Installation Sequence	4
Chapter 4	-	Install Certificate	10
Chapter 5	-	Starting Smart Upload	12



Introduction

TRANSDYNE Inc., an industry leader in information systems for the healthcare industry, specializes in medical transcription and technical consulting. This guide walks you through the process of installing the software provided by Transdyne to electronically send your dictations to our servers over the internet.

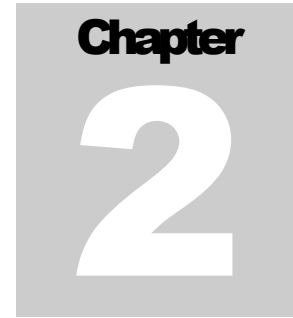
This windows based **Smart Upload** program from TransDyne is used to download dictations from your handheld digital recorder to your local computer and then transmit them to TransDyne's servers over https using 128 bit security.

Installation Sequence

- ✓ Install SMART UPLOAD
- ✓ Configure SMART UPLOAD

Estimated Time

All of the above process would approximately take 10 minutes of your time, at the end of which you will be able to successfully transmit your dictations to TransDyne's servers.



Requirements

Hardware

Pentium II 233 MHz or Higher

64 MB Ram or Higher

1 GB Hard disk space or Higher

CD Rom Drive

Software

OS: Windows 2000/XP/VISTA/7/2003/2008

Internet Explorer 6.0 or Higher.

Microsoft Word or Word Perfect for Editing.

Administrator privileges

You are required to login as administrator or as a user that has administrative privileges to proceed with installation. You are not required to be an administrator to use this program.

User ID and Password

This is supplied to you in your setup kit.

Internet Connection

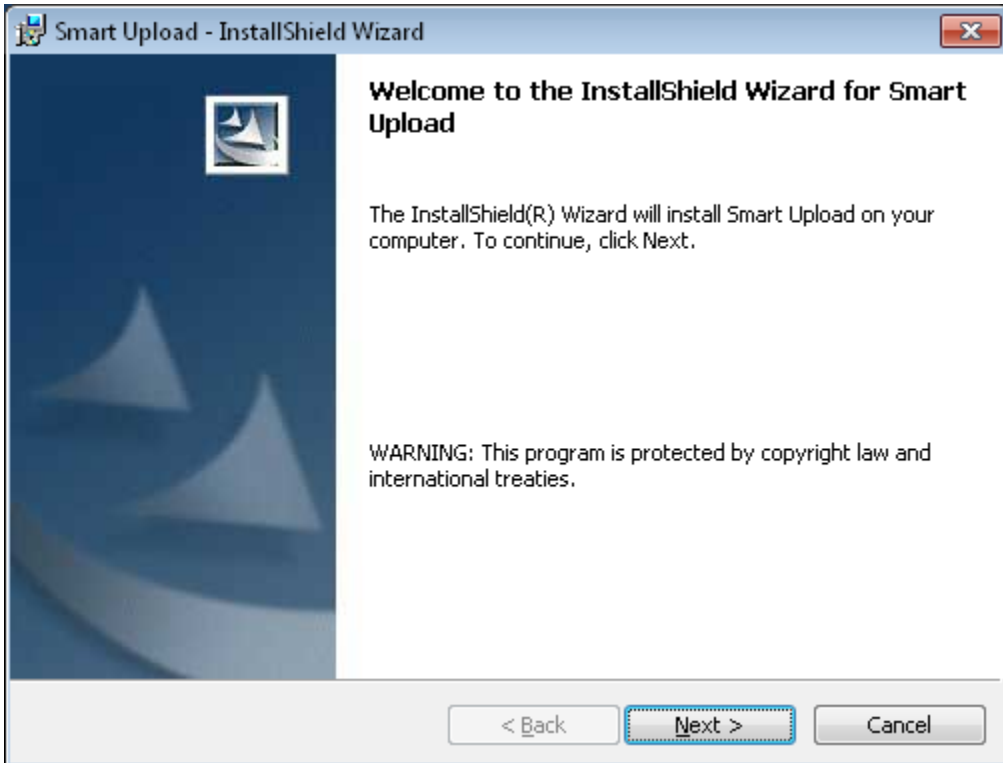
Beginning Installation process

Smart Upload installation should start automatically as soon as you insert the CD supplied with the Install packet. If it does not you can manually start the installation by double clicking on setup.exe that is found in the install CD.

The Install shield wizard will walk you through the installation process.

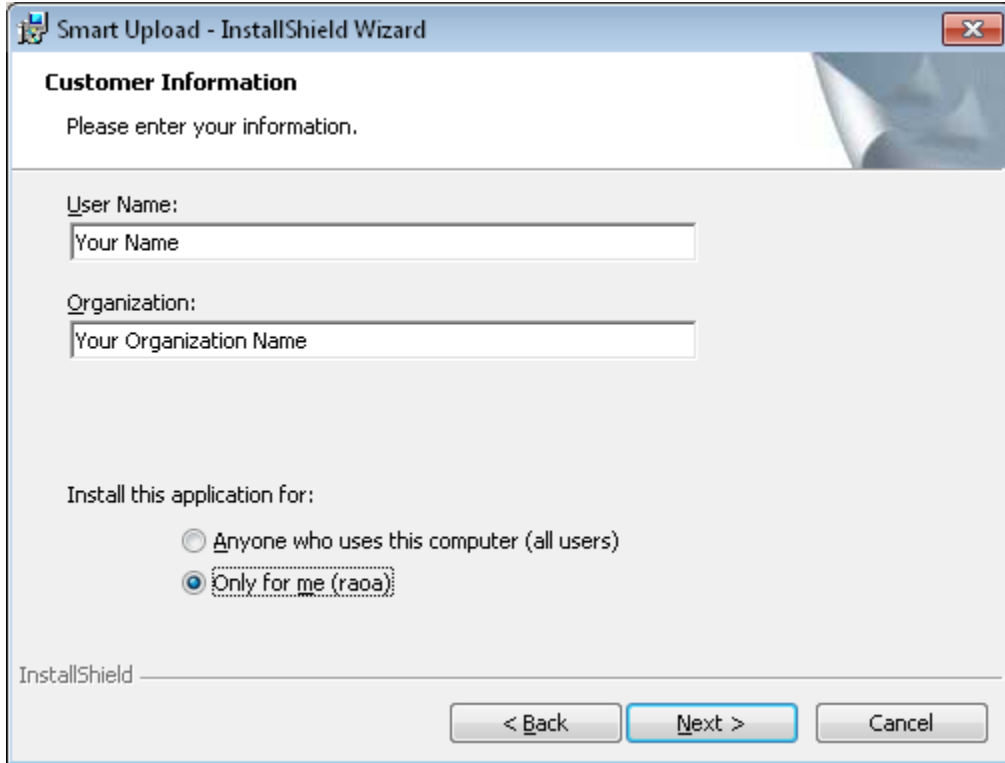
On certain operating systems you will be presented with the user access control screen, click okay to proceed with installation.

Please click next to proceed with the installation on the Welcome Screen.



INSTALLATION GUIDE

Customer Information Dialog: Please enter your name and organization name and select 'Anyone who uses this computer (All Users)' and click 'Next' to proceed with installation.



The image shows a Windows-style dialog box titled "Smart Upload - InstallShield Wizard". The dialog has a blue header bar with a close button (X) in the top right corner. Below the header, the text "Customer Information" is displayed in bold, followed by the instruction "Please enter your information." The main area of the dialog contains two text input fields. The first is labeled "User Name:" and contains the text "Your Name". The second is labeled "Organization:" and contains the text "Your Organization Name". Below these fields, the text "Install this application for:" is followed by two radio button options: "Anyone who uses this computer (all users)" and "Only for me (raoa)". The "Only for me (raoa)" option is selected, indicated by a blue dot. At the bottom of the dialog, the text "InstallShield" is visible on the left. On the right, there are three buttons: "< Back", "Next >", and "Cancel". The "Next >" button is highlighted with a blue border.

Smart Upload - InstallShield Wizard

Customer Information

Please enter your information.

User Name:
Your Name

Organization:
Your Organization Name

Install this application for:

Anyone who uses this computer (all users)

Only for me (raoa)

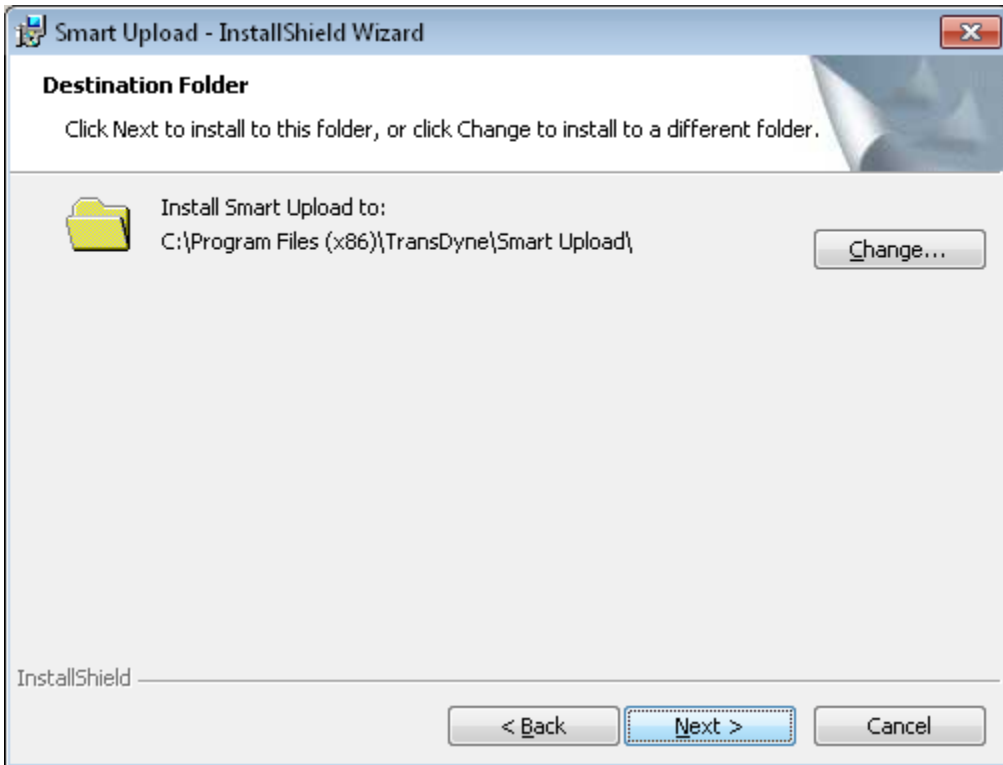
InstallShield

< Back Next > Cancel

INSTALLATION GUIDE

Destination Folder Dialog: The installation program will default the installation folder to 'C:\Program Files\TransDyne\Smart Upload'. If you wish to install to a different folder please click on the change button and select the folder that you want this program to be installed to.

Click on 'Next' to proceed with Smart Upload installation

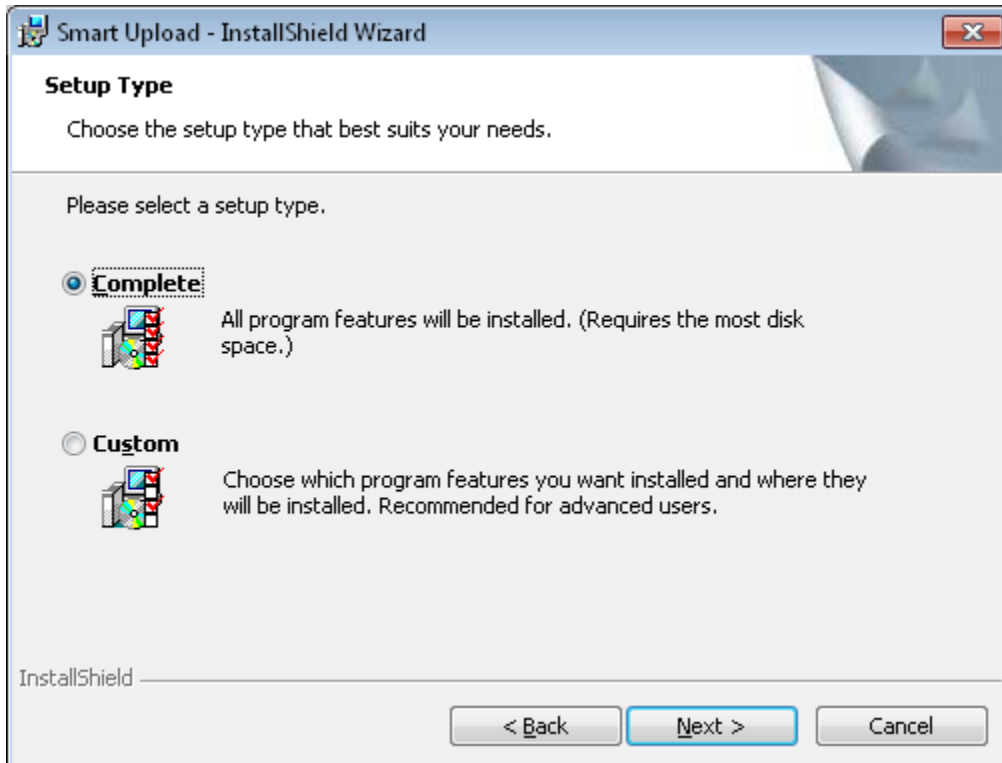


INSTALLATION GUIDE

Feature Selection Dialog: This will be defaulted to 'Complete' installation, which will install both the download from hand held feature and upload to TransDyne server feature. This program will only support some handheld recorders, please check with TransDyne's technical support team to find out if the recorder that you intend to use is supported by this program. If you intend to use this only to upload dictations to TransDyne's servers, please choose custom.

Click Next to proceed to the next step.

If you choose custom please skip the next page and go to page 9.

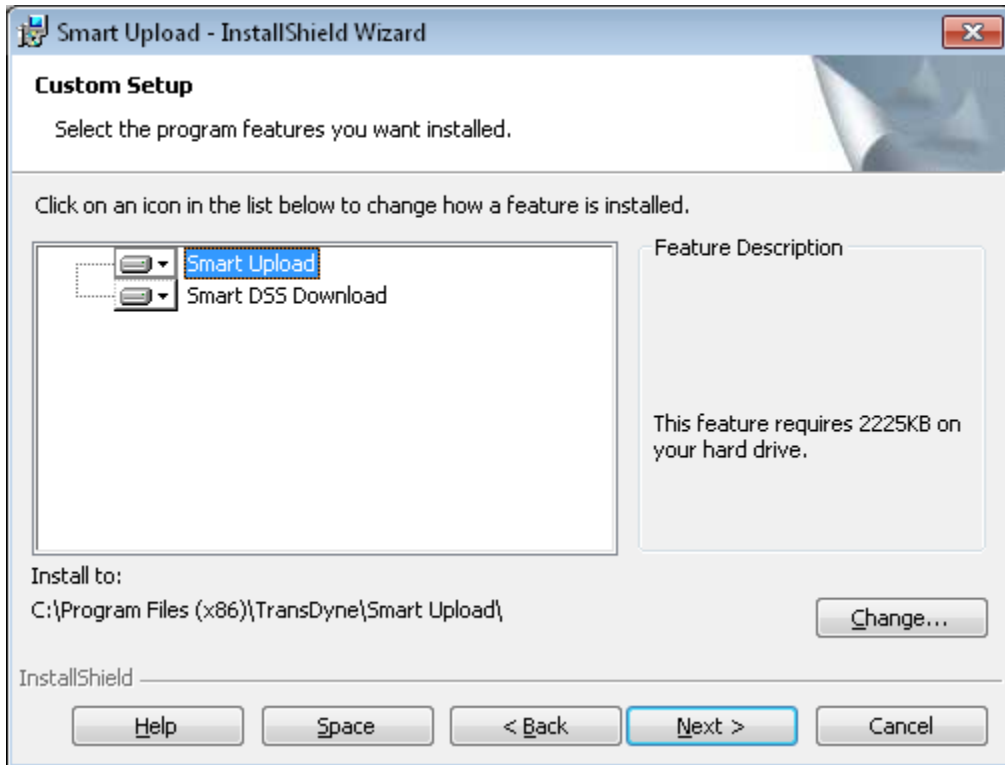


INSTALLATION GUIDE

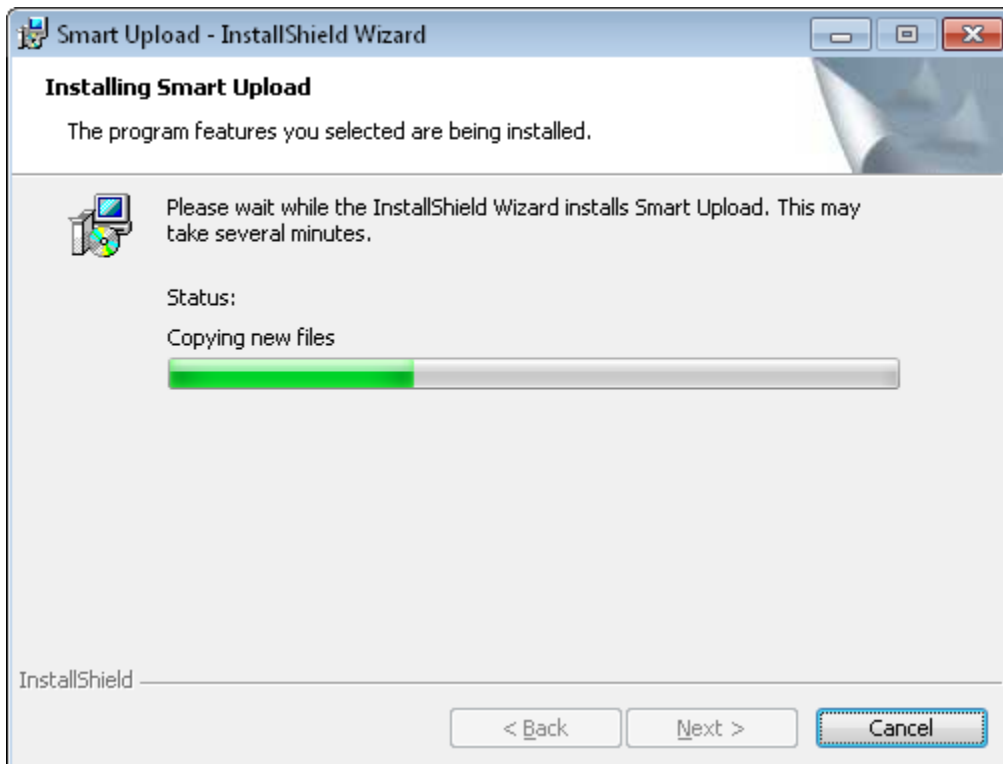
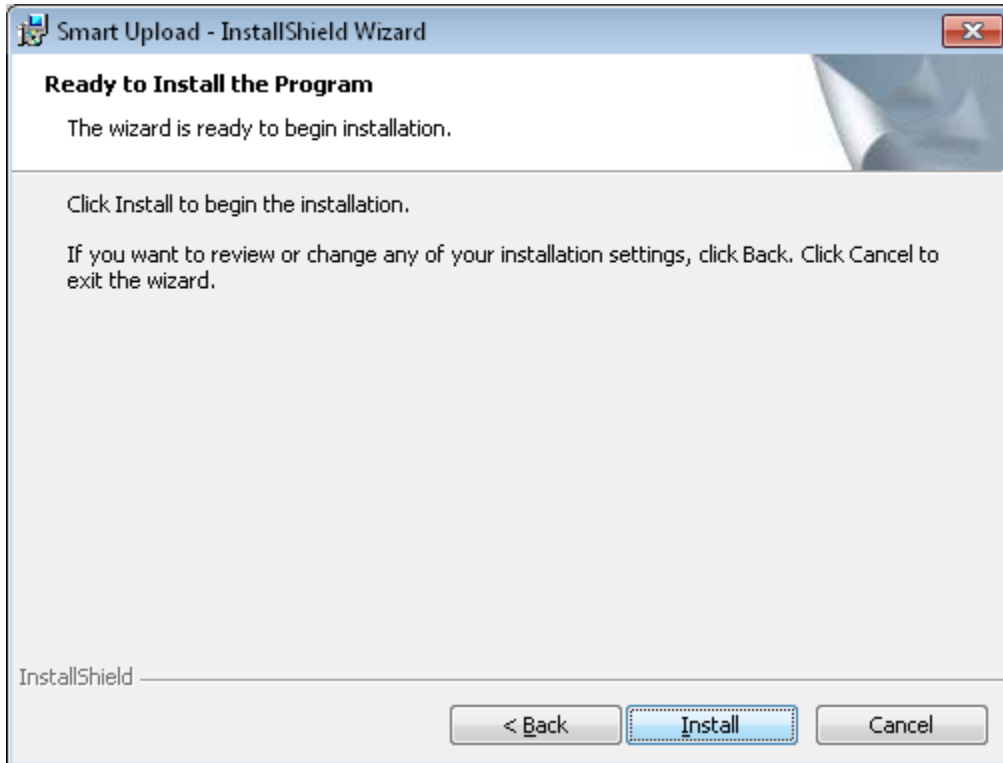
Please skip this step if you choose complete installation.

Smart DSS Download Installation: By default, Smart DSS Downloader will be installed if you select custom setup. You can disable installing the Smart DSS Downloader.

Please click 'Next' to proceed to the next step



Ready to Install: Please click Install to begin Installation.



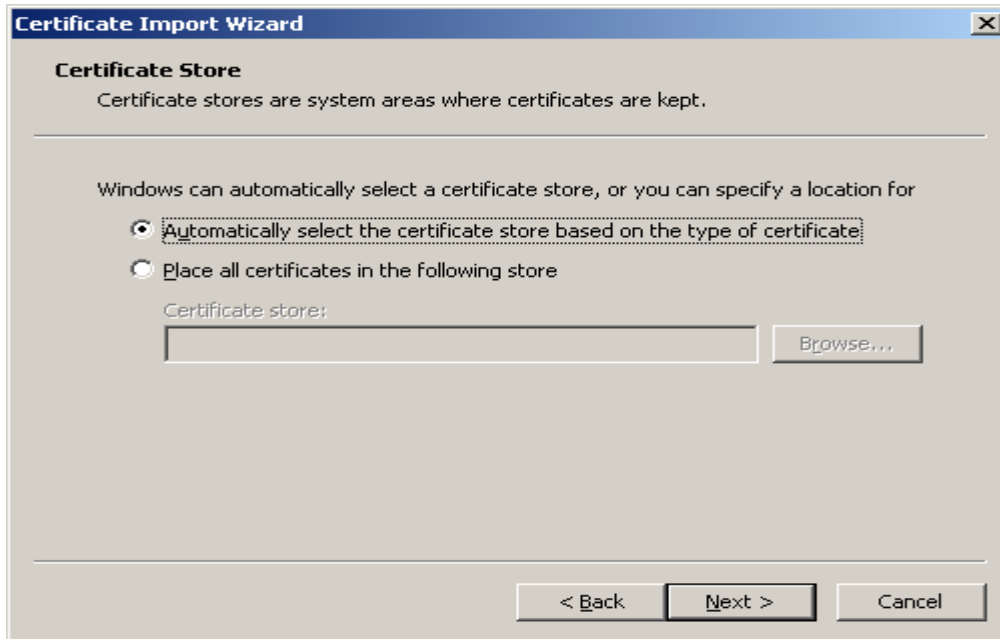
Click On "OK" button. You will be prompted with the following message.

Install Certificate

This step is presented only when installing on computers with pre Windows XP operating system. This will install the certificate required by the https protocol. Please click 'Next' to proceed.



Click Next to proceed.

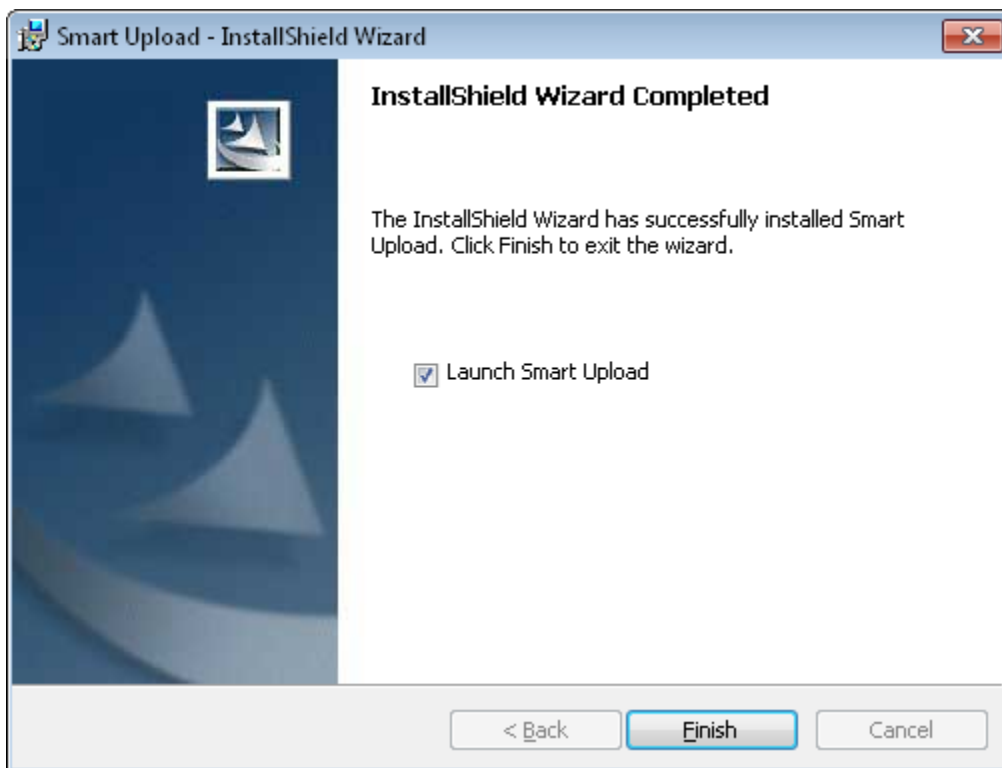


Click Finish to proceed.



Start Smart Upload

Check the “Launch Smart Upload” check box and click on the Finish button to start Smart Upload.



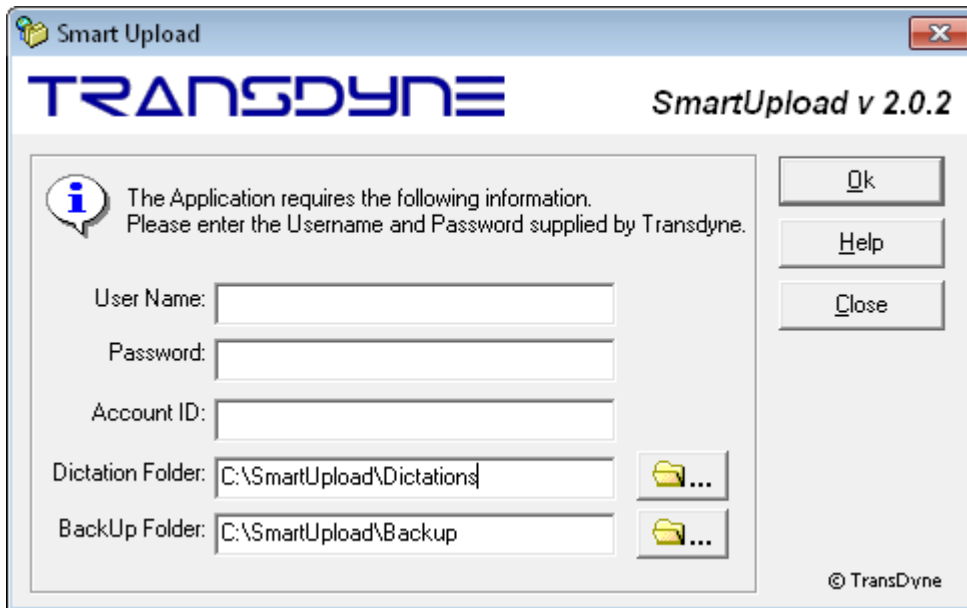
INSTALLATION GUIDE

Input your user id as supplied by TransDyne in the “User Name” field.

Input your password as supplied by TransDyne in the “password” field.

Input your account id as supplied by TransDyne in the “Account ID” field.

Click ‘Ok’ when you are finished.



You will see the following screen when finished.



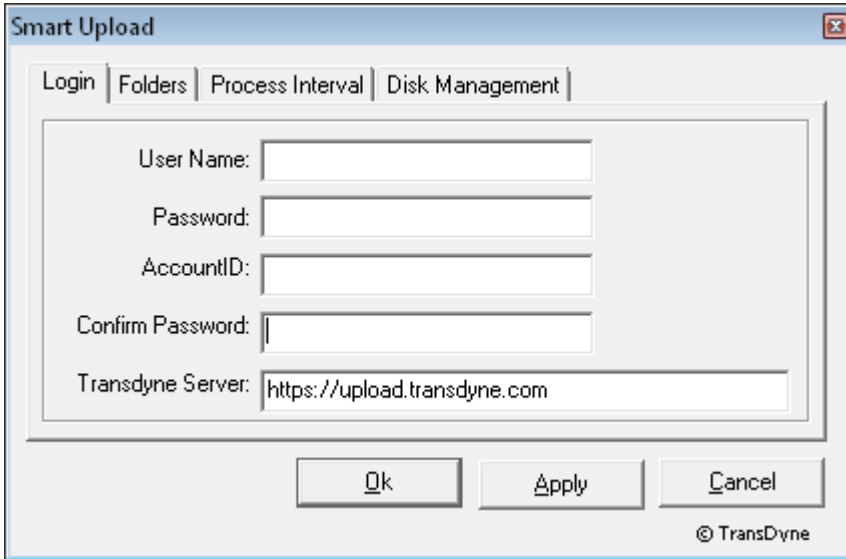
The Smart Upload application is intended to always runs in the background. Clicking on the “*Exit*” button, stops the application and files will not be uploaded until the application is launched again. Use the “*Hide*” button to minimize the application to the task bar.

Smart Upload Setting

Launch the settings screen by clicking on the “*Settings*” button.

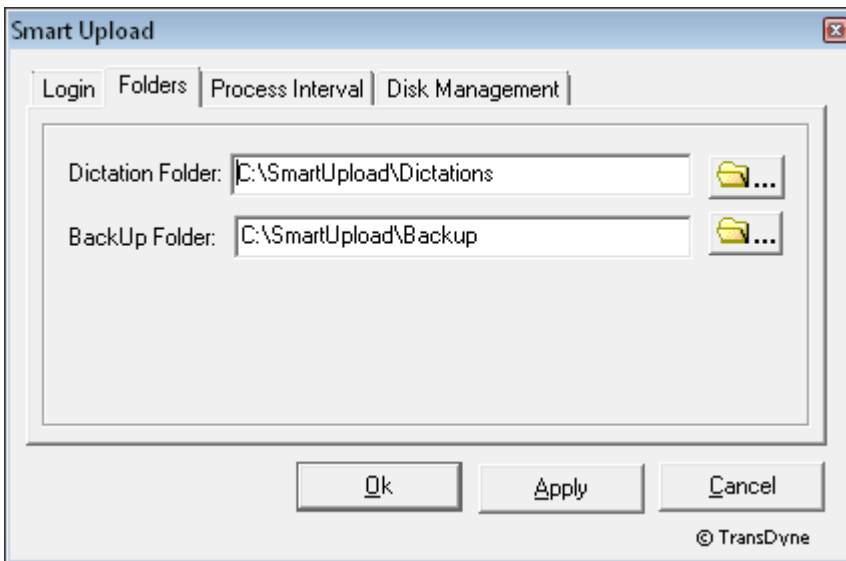
Login Settings

Use this screen to set or change your login credentials.



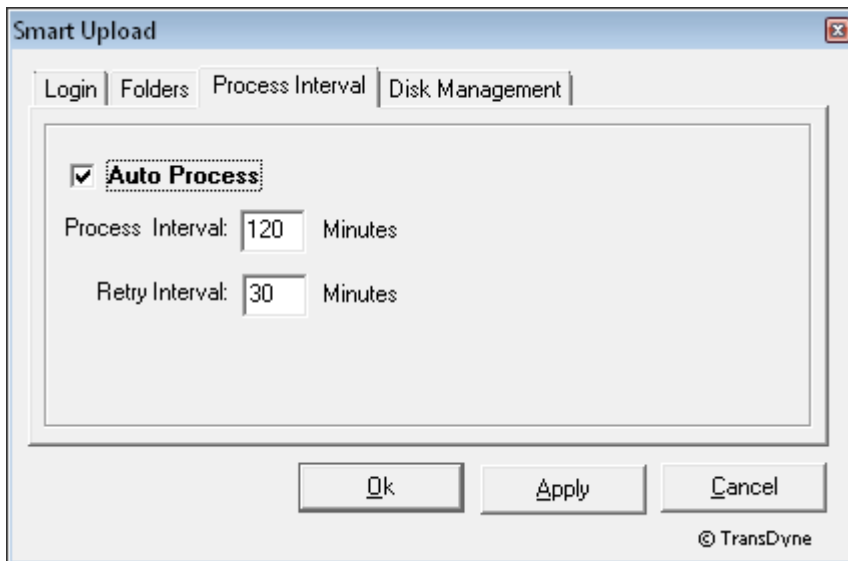
Folder Settings

Use this screen to set or change the Dictation and Backup folder locations.



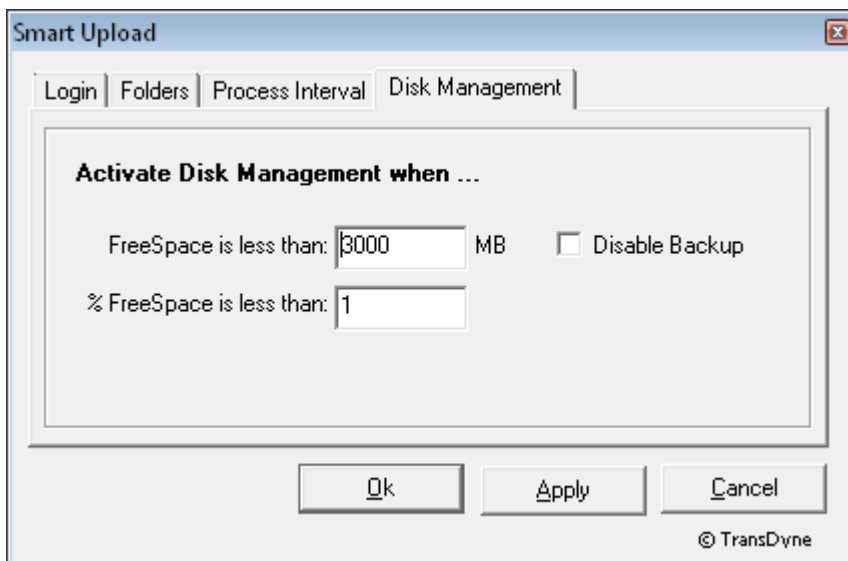
Process Interval Settings

Use this screen to set or change the frequency of file upload.



Disk Management Settings

Use this screen to set or change Disk Management settings.



Copyright Notice and Usage Terms

Copyright Notice

The TransDyne Smart Upload User's Manual is Copyright © 2004- 2011 ThinkSmart Inc, U.S.A. All Rights Reserved.

Terms of Usage for TransDyne Smart Upload User's Manual

This manual is free for the exclusive use of TransDyne Smart Upload users. It is created to help you use the Web Delivery System. Sharing this manual with any one who is not a user of TransDyne Web Delivery is strictly prohibited.